

A5 London Zoo

During the summer holidays, Emma went to London Zoo. She has got a map of the zoo.

a) Look at the map and find the animals in the zoo. Look up the names in the dictionary.

b) Work with your partner. Ask and answer questions.

Example: Where are the kangaroos? – The kangaroos are in D5.

Where can you buy snacks? – You can buy snacks in ... and ...

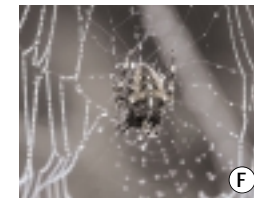


WB
A6

A6 A day at the zoo

a) Match the animals and their description.

b) Which animals would you like to see? Plan your day at the zoo.



Chimpanzees ①
Africa
feeding time: 4 pm
food: plants, fruit, eggs, vegetables

Crocodiles ②
America, Australia, Africa, Asia
feeding time: 1.15 pm
food: meat

Tigers ③
Asia
feeding time: 3 pm
food: meat

Spiders ④
all over the world
feeding time: 2 pm
food: insects, small animals

Hippos ⑤
Africa
feeding time: 1.30 pm
food: plants, grass

Lions ⑥
Africa
feeding time: 12.30 pm
food: meat

WB
A7, A8

A7 Zoo animals

Ask your partner questions about the animals in the zoo. Use the question words *where*, *when*, *what*. Example:

Where do tigers come from? Tigers come from ...
When is feeding time? It's at ...
What do ... eat? They eat ...

Language gym
p. 18, ex. 3

A8 What animal is it?

Think of an animal. Your partner has to ask questions and guess it.
Does your animal come from ...? Yes, it does. / No, it doesn't.
Does it eat ...? Yes, it does. / No, it doesn't.
Is feeding time at ...? Yes, it is. / No, it isn't.
Is it a ...? Yes, it is. / No, it isn't.

Language gym
p. 18, ex. 4

WB
4, p. 138